

OPERATION:

Immediately after brewing cycle, depress agitator ON switch and hold for about 20 seconds. Your coffee will be completely blended and ready to serve.

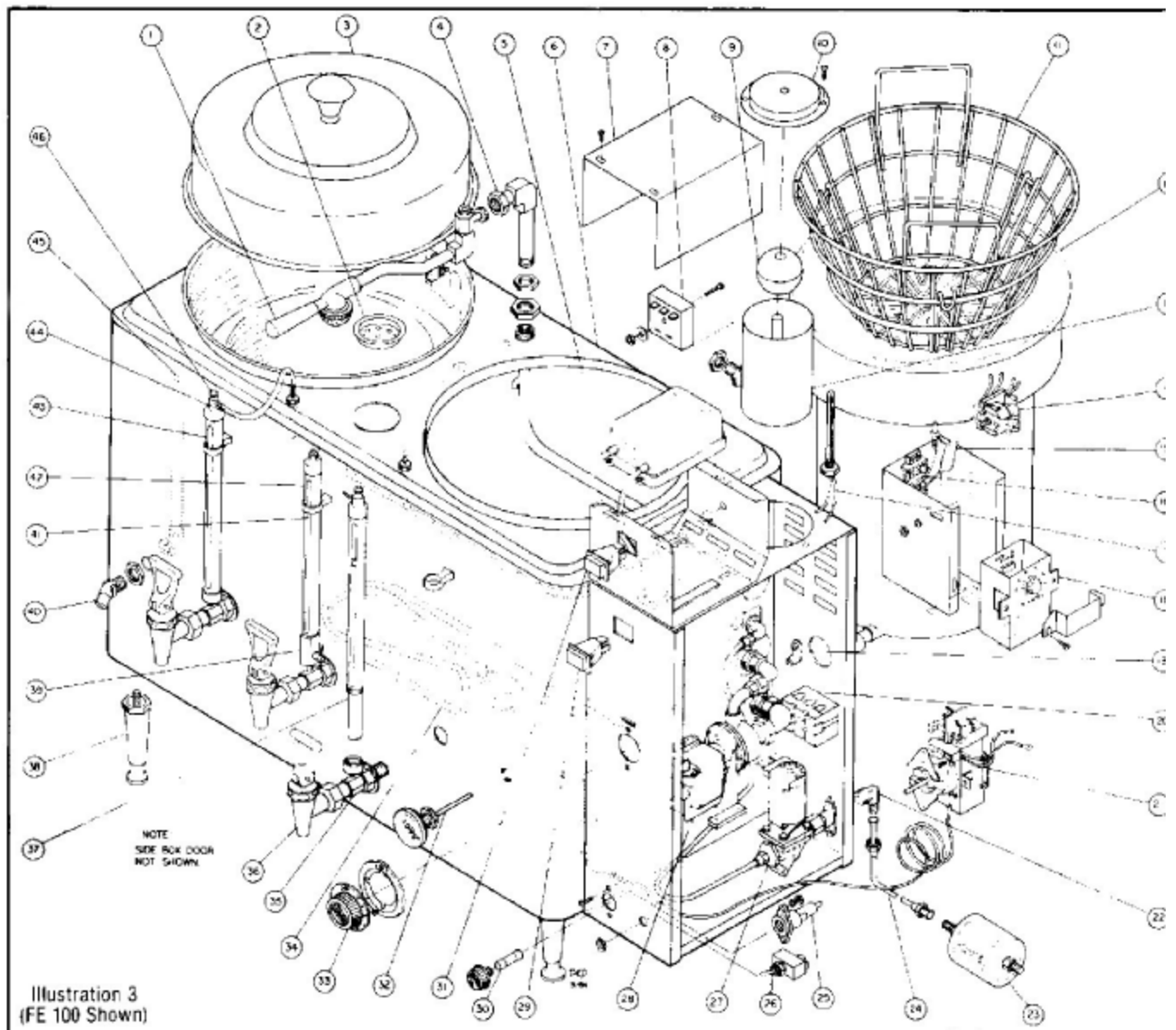
MAINTENANCE:

If agitator pump does not operate when agitator ON switch is pressed, replace switch. If pump still does not operate, replace pump.

REPAIR PARTS LIST

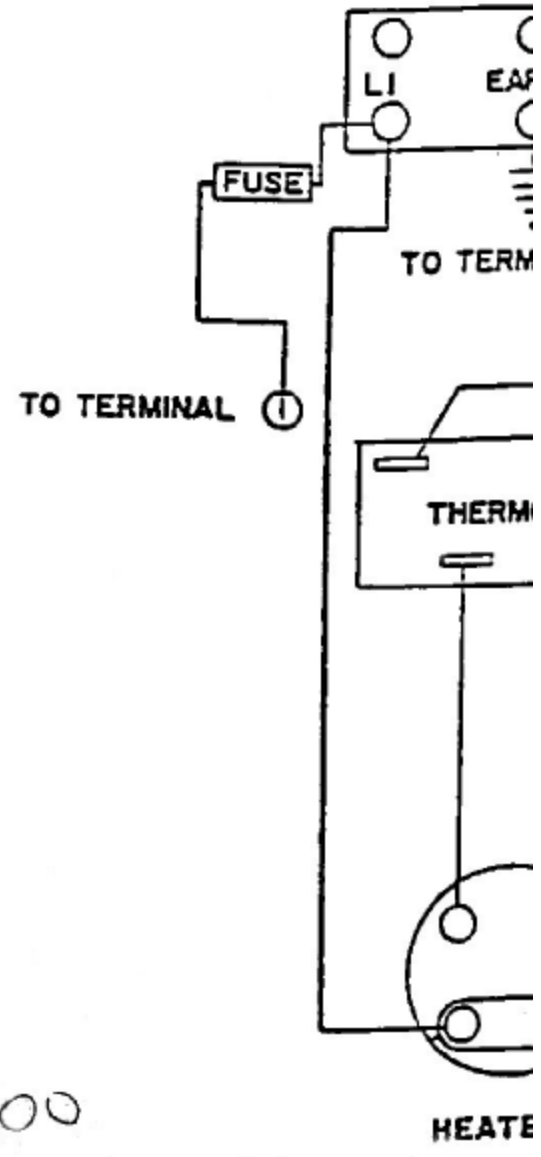
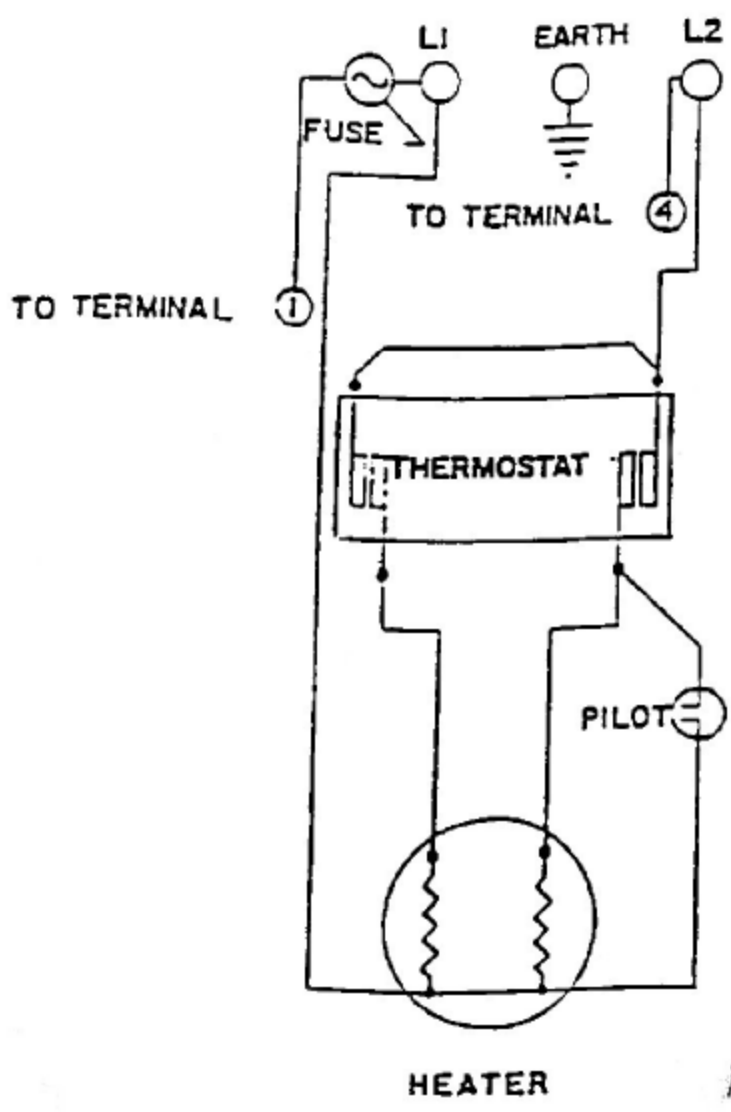
(See Illustration 3)

ITEM NO.	STOCK NO.	DESCRIPTION	MODEL NO.
1	E045A	Complete spray arm assm. w/bypass	FE/INS/CL75, 100
1	E011A	Complete spray arm assembly	CRS3, 33
1	E038A	Complete spray arm assm. w/bypass	FE/CL200; FE250; CRS66
1	E039A	Complete spray arm assm. w/bypass	FE300
2	U019A	Vent cap drain	All (except INS's)
2	E072A	Vent cap drain	All INS's
3	Q024A	Cover with knob	FE/INS/CL75, 100; CRS3, 33
3	Q011A	Cover with knob	FE/CL200; FE250; CRS66
3	Q092A	Cover with knob	FE300
4	E023A	3" Nipple union assembly	All (except FE300)
4	E036A	3" Nipple union assembly	FE300
5	C511A	Agitator pump assembly	All (except CRS's)
6	H050A	9/8" Agitator tubing	All (except CRS's)
7	U152A	Agitator box cover	All (except CRS's)
7	L249A	Agitator assm. (solid state aut.)	All FE's and INS's
7	L251A	Agitator assembly (manual)	All CL's
8	L238A	Solid state agitator timer	All (except CRS's)
9	E040A	Float	All
10	U022A	Float can cover	All
11	V002A	Brew basket (s/s)	FE/INS75, 100; CRS3, 33
11	V002A	Brew basket (s/s)	FE/CL200; FE250; CRS66
11	V081A	Brew basket (s/s)	FE300
11	V113A	Brew basket (polypropylene)	CL75, 100
12	Q082Q	Liner - 3 gallon	FE/INS/CL75, 100; CRS3, 33
12	Q094Q	Left liner - 9 gallon	FE300
12	Q096Q	Right liner - 9 gallon	FE300
12	Q096Q	Left liner - 6 gallon	FE/CL200; FE250; CRS66
12	Q097Q	Right liner - 6 gallon	FE/CL200; FE250; CRS66
13	U023Q	Float can assembly	All
14	L018A	Relay	All
15	C008A	Capacitor & resistor assm.	All
16	B034A	Terminal block	All
17	L019A	Float switch	All
18	L205A	Solid state timer 120V	All (except FE200 and CL's)
18	L210A	Solid state timer 220V	All (except FE200 and CL's)
18	L214A	Dual solid state timer 120V	FE200
18	L216A	Dual solid state timer 220V	FE200
18	L154A	Mechanical timer (Not shown)	All CL's
19	B039A	Grounding lug	All
19	C034A	Contact (Not shown)	FE300
20	B000A	Terminal block	All single phase
20	B017A	Terminal block	All three phase
21	L029A	Thermostat	All
22	K028A	Elbow	All
23	E002A	Water strainer	All
24	H016Q	19" Copper tubing	All
25	C396A	Fuse holder, SC-5 type	All
25	C142A	Fuse holder, FN type (Canadian)	All
26	L017A	Cycle stop switch	All (except CL's)
27	L022A	Solenoid .28 GPM	FE/INS/CL75, 100; CRS3, 33
27	L010A	Solenoid 50 GPM	FE/CL200; FE250; CRS66
27	L060A	Solenoid .75 GPM	FE300
27	X008A	Solenoid coil	All
27	X033A	Solenoid diaphragm repair kit	All
27	X035A	Solenoid flow washer (Not shown) .28	FE/INS/CL75, 100; CRS3, 33
27	X036A	Solenoid flow washer (Not shown) .5	FE/CL200; FE250; CRS66
27	X038A	Solenoid flow washer (Not shown) .75	FE300
28	E000A	G-water pump	All
28	E000T	Rebuilt G-water pump	All
28	U070A	G-water pump fan	All
28	E069A	H-water pump	All
28	X032A	Seal kit for G-water pump	All
29	L012A	BREW switch	All (except CL's)
30	C395A	Fuse 5A SC-6	All
30	C141A	Fuse, 5AFN (Canadian)	All
31	L236A	Agitator	All (except CRS's and CL's)
31	L052A	Agitator	All CL's
32	L007A	Dial thermometer	All (except INS's)
32	L323A	Dial thermometer	All INS's
33	M008A	Thermostat knob	All
34	G013A	Water heater 3kw-240V-1Ph	FE/INS100; CRS33
34	G031A	Water heater 7kw-240V-1Ph	FE/INS/CL75; CRS3; CL100
34	G011A	Water heater 5kw-240V-1Ph	FE/CL200; FE250; CRS66; FE300
34	G026A	Water heater 3kw-240V-3Ph	FE/INS/CL100; CRS33
34	G024A	Water heater 5kw-240V-3Ph	FE/INS/CL75; CRS3
34	G018A	Water heater 5kw-240V-3Ph	FE/CL200; FE250; CRS66
34	G040A	Water heater 5kw-480V-3Ph	FE/CL200; CRS66; FE250, 300



ITEM NO.	STOCK NO.	DESCRIPTION	MODEL NO.
34	G043A	Water heater 8kw-480V-3Ph	FE/INS/CL75, 100, CRS3, 33
35	D021A	Shank for coffee gauge	All (except INS's)
35	D045A	Shank for gauges	All INS's
36	D017A	Water and coffee faucet	All
37	X005A	Coffee gauge glass	FE/INS/CL75, 100, CRS3, 33
37	X004A	Coffee gauge glass	FE/CL200; FE250; CRS66
37	X044A	Coffee gauge glass	FE300
38	M005S	Legs, chrome	All (except CL's)
38	M172S	Legs, black	All CL's
39	D022A	Shank for water gauge	All (except INS's)
40	E009A	Overflow drain	All (except INS's)
40	E071A	Overflow drain	All INS's
41	X006A	Water gauge glass	FE/INS/CL75, 100, CRS3, 33
41	X030A	Water gauge glass	FE/CL200; FE250; CRS66
41	X043A	Water gauge glass	FE300
42	D024A	8" or 8½" Water gauge shield	FE/INS/CL75, 100, CRS3, 33
42	D001A	9" Water gauge shield	FE?CL200; FE250; CRS66
42	D032A	12" Water gauge shield	FE300
43	D001A	9" Coffee gauge shield	FE/INS/CL75, 100, CRS3, 33
43	D020A	10-¼" Coffee gauge shield	FE/CL200; FE250; CRS66
43	D031A	14½" Coffee gauge shield	FE300
44	H051A	5" Agitator Tubing	All (except CRS's)
45	H025Q	Overflow tube	All
46	K108A	Vent cap assembly	All (except CRS's)
	718	Filter pack (Not shown)	FE/INS/CL75, 100, CRS3, 33
	820	Filter pack (Not shown)	FE/CL200; FE250; CRS66
	923	Filter pack (Not shown)	FE300

KW (TOTAL)	6.7	VOLTS	220	AMPS	31.4	PHASE
NO OF ELEMENTS	1	KW/ELEMENT	8	VOLTS/ELEMENT		
THERMOSTAT	D-1			PILOT	240	V
CONTACTOR		COIL VOLTS				
TRANSFORMER		VOLTS				
SIDE BOX		VOLTS	220			

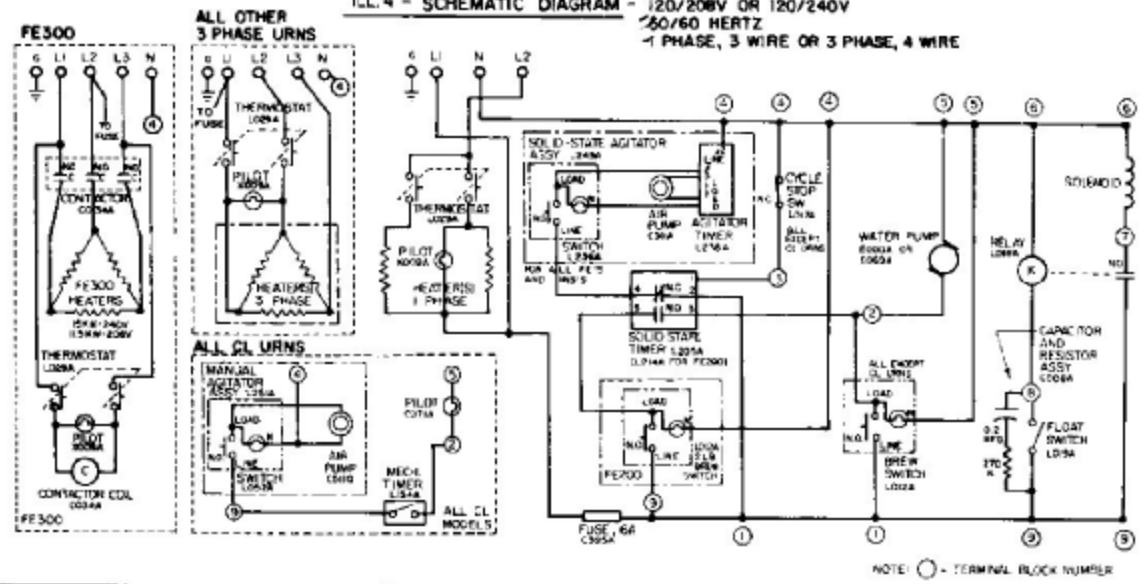


MODEL NOS:
 CL-100
 FE-100

FE100

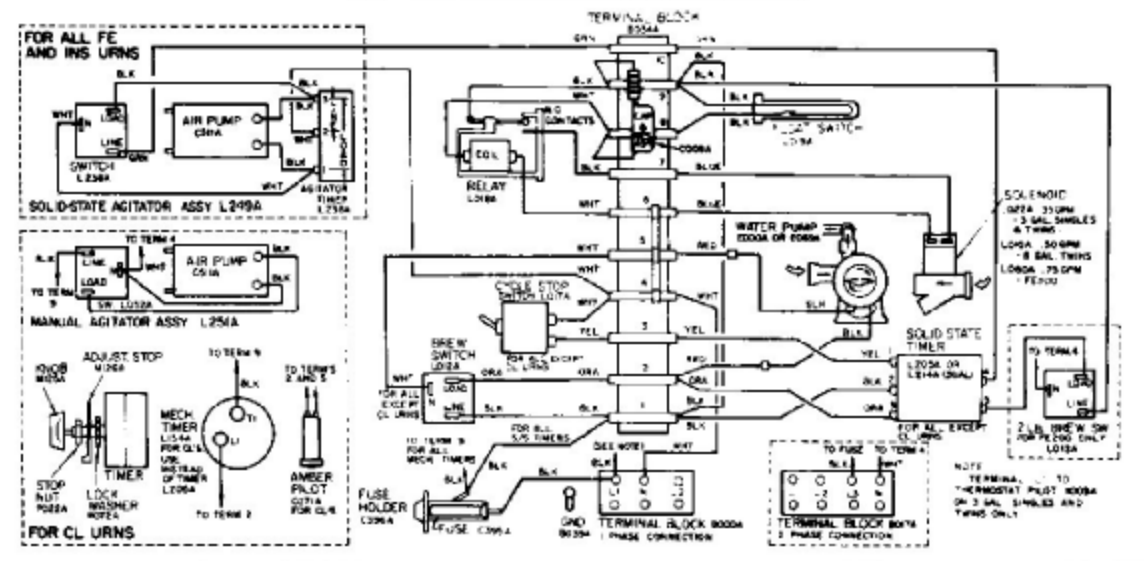


ILL. 4 - SCHEMATIC DIAGRAM - 120/208V OR 120/240V
 60/60 HERTZ
 1 PHASE, 3 WIRE OR 3 PHASE, 4 WIRE



NOTE: ○ - TERMINAL BLOCK NUMBER

ILL. 5 - SIDE BOX WIRING DIAGRAM - ALL URNS



ILL. 6 - POWER WIRING DIAGRAMS

