

Hamilton Beach Commercial

March 2001 Rev. E

990-220 Container Assembly

Complete Assembly 6126-990

Fill Cap 31809900000

Cover 31819900000

Cover Gasket 280045100

Cutter Complete 921999001

Blade Gasket 31309900000

Container (incl. Cover Gasket)
931099000

Wire Clip 280056700

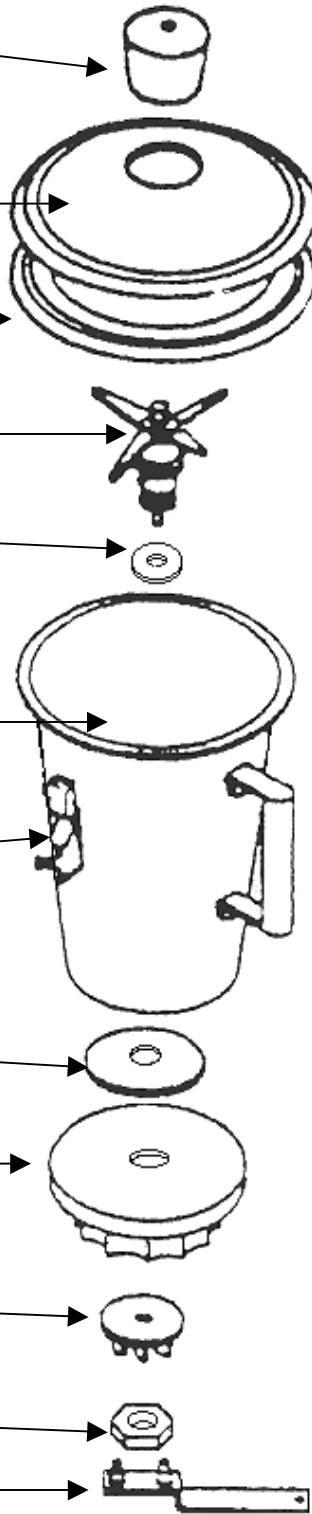
Container Gasket 31099900000

Container Base 31319900000

Clutch 83249900500

Locknut 42011001200

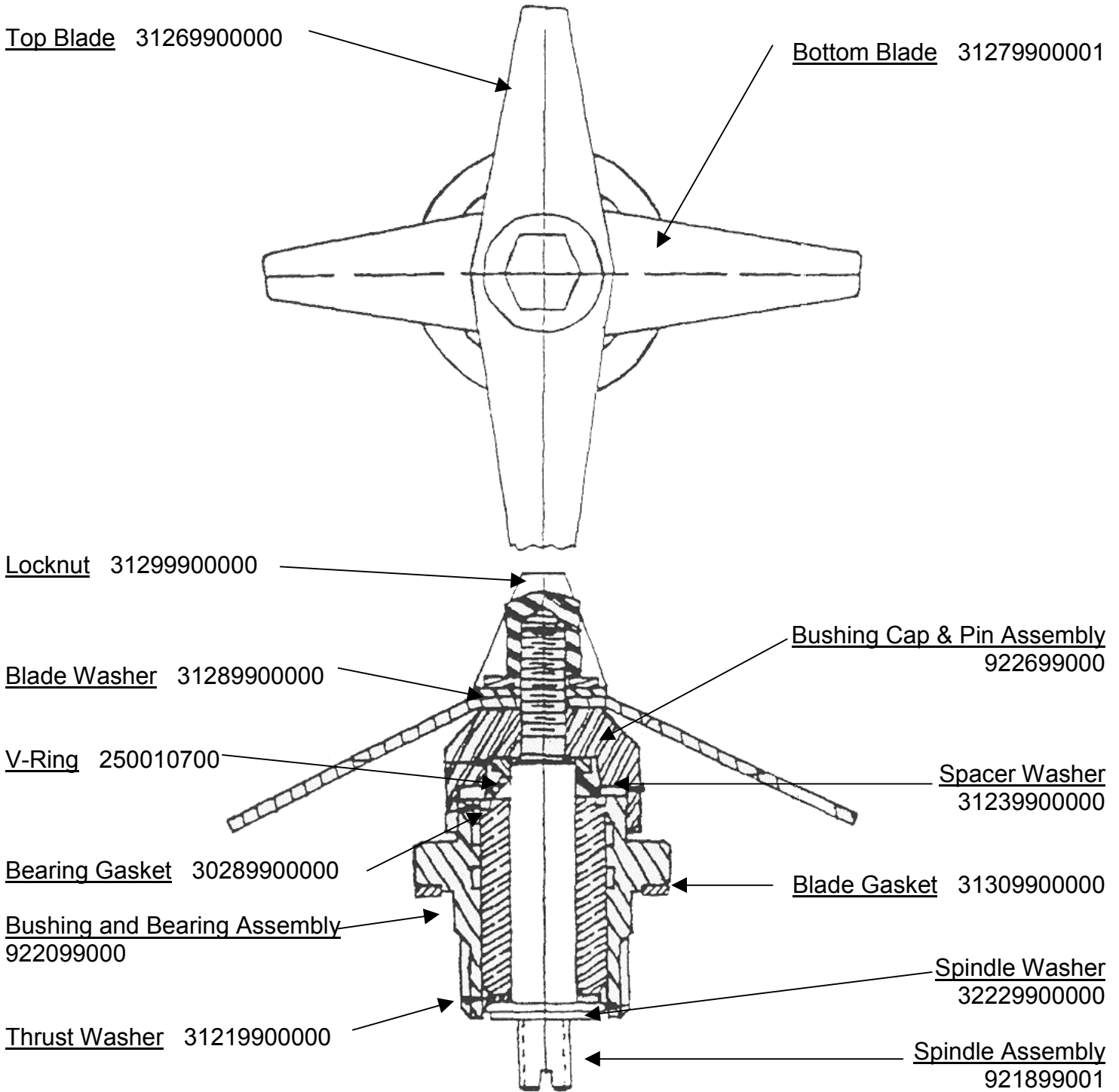
Spanner (for clutch removal)
35139900000



Hamilton Beach Commercial

July 1999 Rev. D

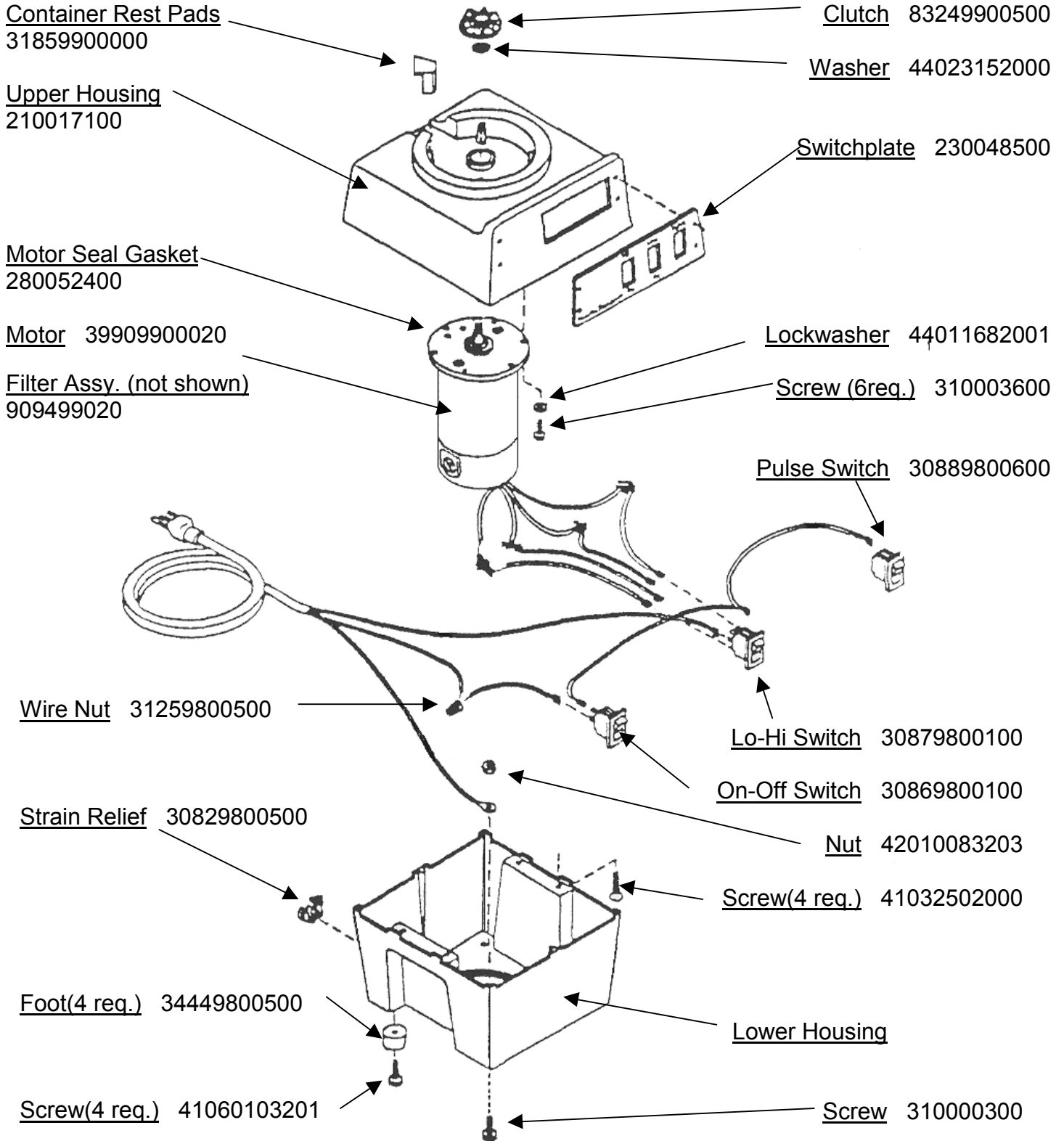
990-220 Cutter Assembly



Hamilton Beach Commercial

July 1999 Rev. D

990-220 Housing Assembly



Hamilton Beach Commercial

July 1999 Rev. D

990 Clutch Removal / Cutter Disassembly

Clutch removal from the Container Assembly

Unplug unit. Using a 5/32 Allen wrench, turn the container spindle assembly counter-clockwise to loosen and remove the drive clutch.

Place spanner tool “pins” into the locking nut “holes” and turn clockwise, then remove the base and large gasket. Slip cutter assembly from inside of the container base.

Clutch Removal from Motor Base

Tap sharply against “ridge” on clutch with a mallet and screwdriver in a clockwise direction. Once loosened, spin off to remove.

Clutch Installation

Installation is reverse of removal. Clutch will tighten fully when motor is engaged.

Cutter Disassembly

While holding cutter, use a 7/16 open- or box-end wrench to loosen the cutter assembly nut, turning clockwise. Assembly is the reverse of removal.