



# TOAST-MAX<sup>®</sup>

## Electric Conveyor Toasters

*TM-5H, -10H Series*

**REPLACEMENT**

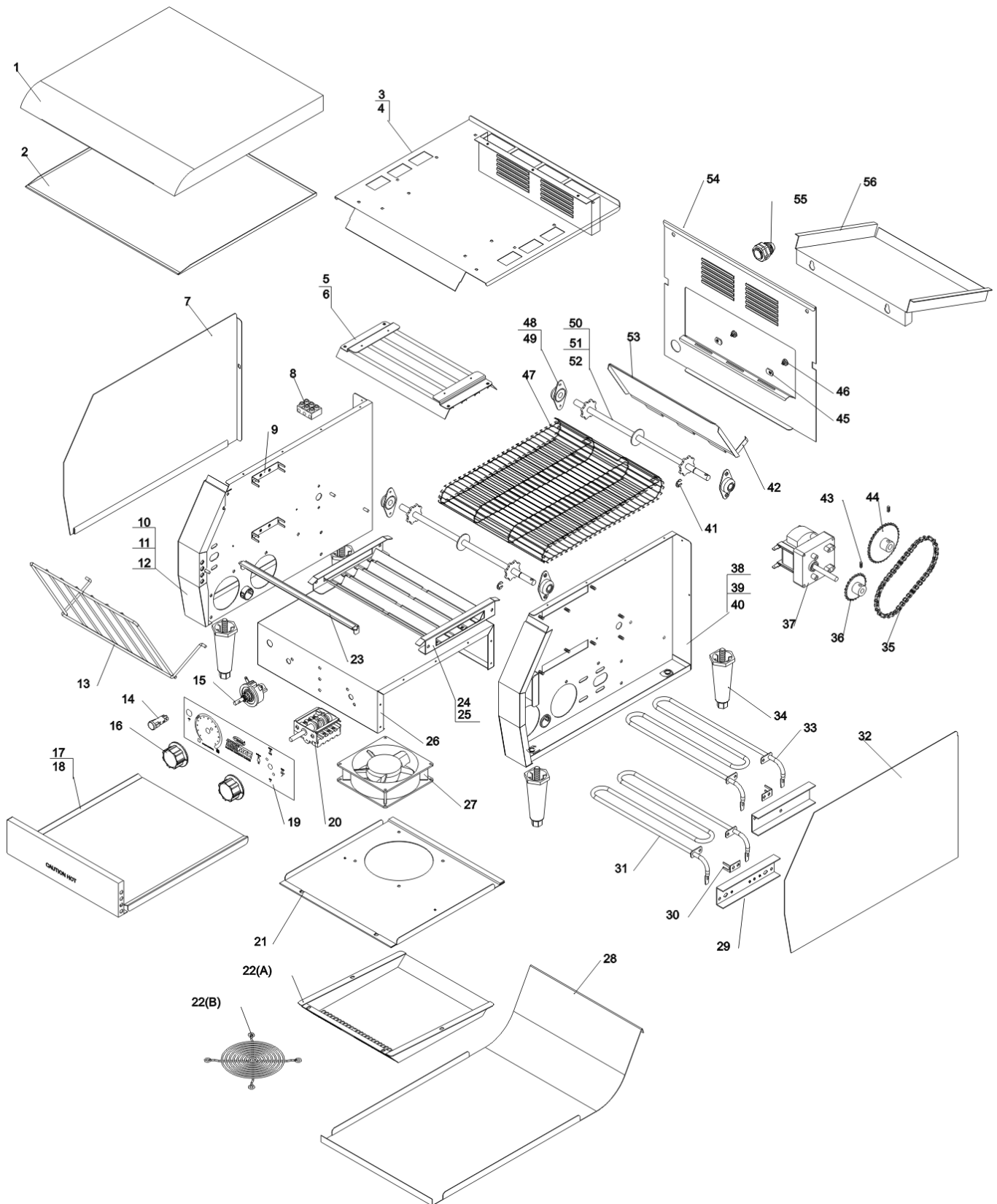
**PRICE (U.S.D.)**

**&**

**PARTS LIST**

**INFORMATION**

# HATCO TM10H / TM5H Parts Diagram



## MODEL TM-5H & TM-10H

<u>Item</u>	<u>Description</u>	<u>Hatco Part Number</u>	<u>U.S.D. List Price Ea.*</u>
1 & 2	Top Cover with Insulation, TM-5H	X04.05.435.00	\$35.00
1 & 2	Top Cover with Insulation, TM-10H	X04.05.434.00	40.00
7	Side Panel (LH)	X04.05.436.00	24.00
8	Terminal Block - 3 Pole	X02.15.052.00	6.00
13	Wire Feed Ramp, TM-5H	X04.05.447.00	9.00
13	Wire Feed Ramp, TM-10H	X04.05.448.00	9.00
14	Indicator Light - Green	X02.19.175.00	8.00
14	Indicator Light - Red	X02.19.176.00	8.00
15	Rheostat Speed Control - 120V	X02.13.331.00	33.00
15	Rheostat Speed Control - 220V	X02.13.330.00	33.00
16	Control Knob	X05.30.093.00	8.00
17	Crumb Tray, TM-5H	X04.05.445.00	15.00
18	Crumb Tray, TM-10H	X04.05.444.00	19.00
19	Decal-Control, TM-5H	X07.03.465.00	7.00
19	Decal-Control, TM-10H	X07.03.466.00	7.00
20	Selector Switch	X02.19.174.00	49.00
22A	Cover, Cooling Fan, TM-10H	X04.05.446.00	9.00
22B	Fan Guard, TM-5H	X02.12.084.00	5.00
27	Fan, Circulating, 120V	X02.12.085.00	34.00
27	Fan, Circulating, 220V	X02.12.082.00	34.00
28	Discharge Chute, TM-5H	X04.05.443.00	27.00
28	Discharge Chute, TM-10H	X04.05.442.00	34.00
29	Bracket, Heat Element	X04.05.449.00	5.00
31	Heat Element, Bottom, TM-5H, 120V	X02.09.264.00	33.00
31	Heat Element, Bottom, TM-5H, 220V	X02.09.259.00	33.00
31	Heat Element, Bottom, TM-10H, 120V	X02.09.265.00	33.00
31	Heat Element, Bottom, TM-10H, 220V	X02.09.261.00	33.00
32	Side Panel (RH)	X04.05.437.00	24.00
33	Heat Element, Top, TM-5H, 120V	X02.09.262.00	33.00
33	Heat Element, Top, TM-5H, 220V	X02.09.258.00	33.00
33	Heat Element, Top, TM-10H, 120V	X02.09.263.00	33.00
33	Heat Element, Top, TM-10H, 220V	X02.09.260.00	33.00
34	Leg 10cm (4")	X05.30.092.00	7.00
35	Drive Chain, TM-5H	X05.03.040.00	11.00
35	Drive Chain, TM-10H	X05.03.044.00	11.00
36	Sprocket-Motor, TM-5H	X05.09.052.00	11.00
36	Sprocket-Motor, TM-10H	X05.09.053.00	11.00
37	Gear Motor, 120V	02.12.081.00	134.00
37	Gear Motor, 220V	02.12.079.00	134.00
41	Retaining Ring	X05.03.043.00	1.00
44	Sprocket Conveyor, TM-5H	X05.09.054.00	11.00
44	Sprocket Conveyor, TM-10H	X05.09.055.00	11.00
46	Thumb Screw	X05.04.488.00	3.00
47	Wire Belt, TM-5H	X05.03.041.00	37.00
47	Wire Belt, TM-10H	X05.03.042.00	40.00
48	Bearing Assembly	X05.02.024.00	11.00
50	Shaft Assembly, TM-5H	X05.07.025.00	16.00
51	Shaft Assembly, TM-10H	X05.07.026.00	16.00
53	Discharge Vane, TM-5H	X04.05.440.00	9.00
53	Discharge Vane, TM-10H	X04.05.441.00	11.00
55	Cord Grip	X02.20.322.00	5.00
56	Rear Discharge Tray, TM-5H	X04.05.439.00	16.00
56	Rear Discharge Tray, TM-10H	X04.05.438.00	24.00
-	Diode, TM	X02.40.046.00	1.00
-	Power Cord - Shuko Plug	X02.18.164.00	13.00
-	Power Cord - Bristish Plug	X02.18.165.00	19.00
-	Power Cord - No Plug	X02.18.166.00	13.00

---

---

**HATCO CORPORATION**

P.O. BOX 340500, Milwaukee, WI 53234-0500 U.S.A.

(414) 671-6350

Fax (414) 671-3976

[www.hatcocorp.com](http://www.hatcocorp.com)