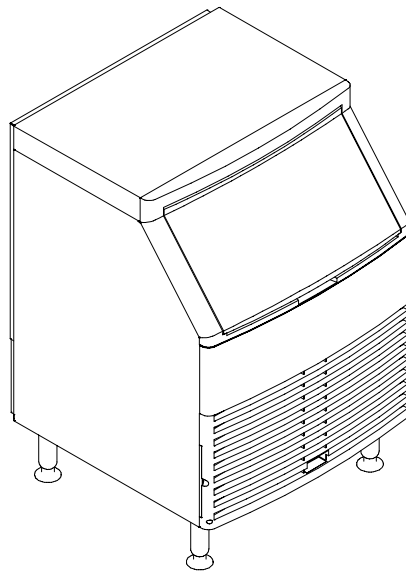




Q210 Ice Machine

Parts List

QR0210A
QR0211W
QD0212A
QD0213W
QY0214A
QY0215W

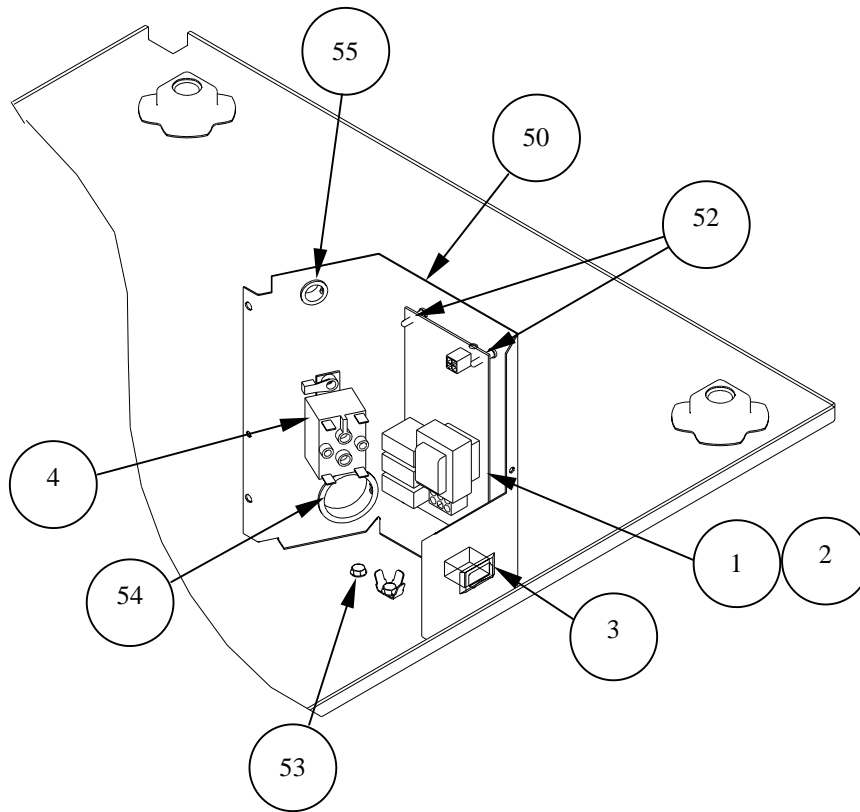


sv1686g

Thank you for selecting a Manitowoc Ice Machine, the dependability leader in ice making equipment and related products. With proper care and maintenance, your new Manitowoc Ice Machine will provide you with many years of reliable and economic performance.

We reserve the right to make product improvements at any time. Specifications and design are subject to change without notice.

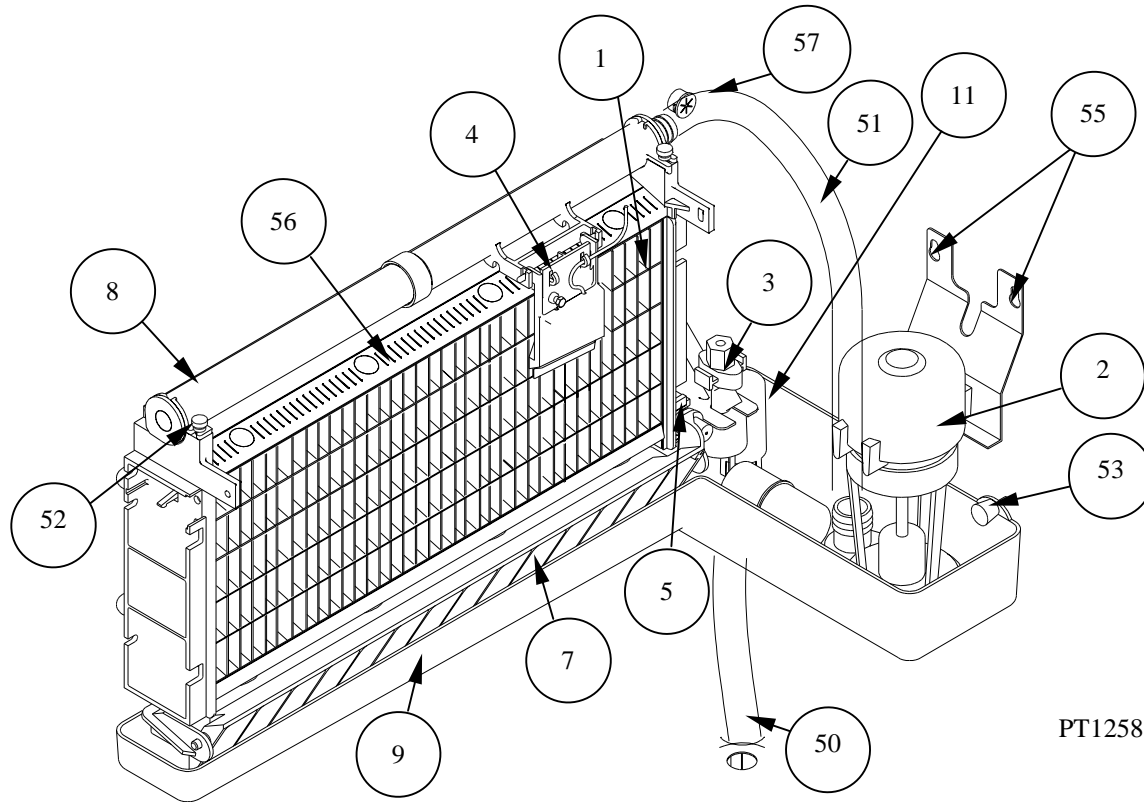
Q210 CONTROL BOX



Pt1262

DESCRIPTION	PART NUMBER
1 Control Board (for use with all voltages)	76-2907-3
2 10 amp Fuse-Mounted on Control Board	25-1149-3
3 Toggle Switch only	23-0151-3
a. Wiring Harness for Toggle Switch	20-3248-3
4 Relay	
a. 115v/60Hz/1ph	85-0553-3
b. 230v 50/60Hz/1ph	85-0554-3
5 Wiring Harness	
a. Air Cooled (not shown)	20-3246-3
b. Water Cooled (not shown)	20-3271-3
c. Ice Thickness Control Probe (wire lead and connectors only)	20-3284-3
6. Power Cord	
a. 125v/60Hz (not shown)	20-3266-3
b. 230v/60Hz (not shown)	20-3270-3
c. 230v/50Hz (not shown)	20-3269-3
 Miscellaneous - Brackets, Screws, etc.	
50 Control Box	602683-1
51 Control Box Cover (Not shown)	76-2908-3
52 Control Board Mounting Supports	43-0225-3
53 Screw, #10-24 x .50 Ground	52-0224-3
54 Bushing	25-0013-9
55 Bushing	25-0218-9

Q210 EVAPORATOR COMPARTMENT

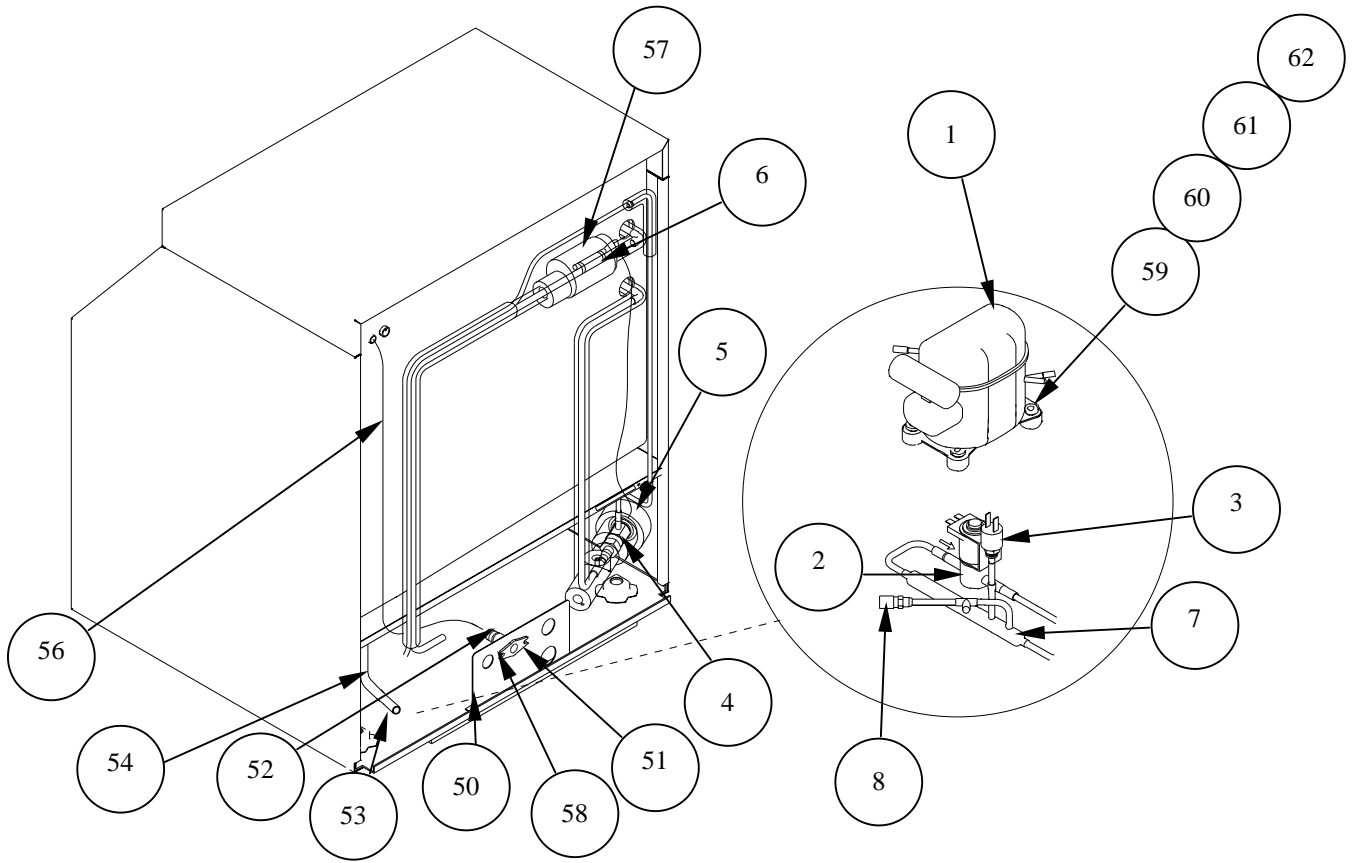


DESCRIPTION

PART NUMBER

1	Evaporator Assembly	
a.	Regular Cube	76-2954-9
b.	Dice Cube	76-2955-9
c.	Half Dice Cube	76-2956-9
2	Water Pump	
a.	115v/60Hz	76-2306-3
b.	208-230v/60Hz or 230v/50Hz	76-2601-3
3.	Float Valve (Complete Assembly)	83-6904-9
a	Float Valve Screen	83-6906-9
b	Float Valve plunger	83-6908-9
c	Float Valve Compression nut	56-5072-9
4	Ice Thickness Control Probe	25-1147-3
5	Magnetic Bin Switch (Mounted to Evaporator)	23-0148-3
6	Water Flow Clamp (not shown)	76-2054-3
7	Ice Damper	76-0048-3
a.	Ice Damper Magnet and cap	76-2909-3
8	Water Distribution Tube	76-2498-3
9	Water Trough	43-0386-3
10	Water Inlet Tubing (not shown)	44-2029-1
11.	Siphon Cap	43-0222-3
	Miscellaneous - Brackets, Screws, etc.	
50	Drain tube	76-0085-3
51.	Tubing (Water Pump Out)	44-2142-3
52.	Screw, #8-32 x .63 Nylon Water Distribution Tube Mounting	50-0001-3
53.	Thumbscrew, #8-32 x .625	53-0510-3
54.	Screw, #10-24 x .750 Used to Mount Evaporator (not shown)	52-0218-9
55.	Screw, #10-24 x .50	52-0206-9
56.	Evaporator Top Molding and Gasket Assembly	76-2621-3
57.	Bushing (Ice Thickness Probe Wire)	25-0016-9

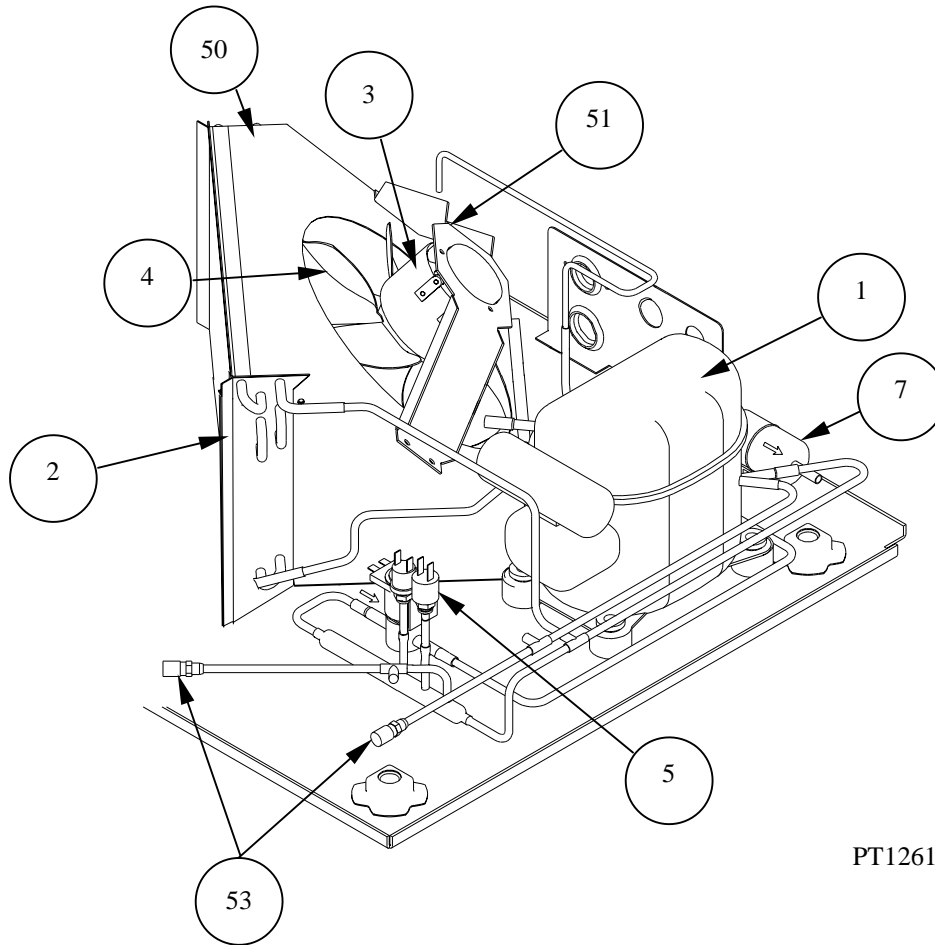
Q210 REFRIGERATION COMPARTMENT - COMMON PARTS



Q210 REFRIGERATION COMPARTMENT - COMMON PARTS

DESCRIPTION		PART NUMBER
1	Compressor	
a.	115v/60Hz/1ph	76-2910-3
a1.	Overload for compressor	85-0562-3
a2.	Starting Device	85-0565-3
a3.	Start Capacitor	85-0580-3
b.	208-230v/60Hz/1ph.....	76-2911-3
b1.	Overload for compressor	85-0563-3
b2.	Starting Device	85-0566-3
b3.	Start Capacitor	85-0576-3
c.	224-240v/50Hz/1ph.....	76-2912-3
c1.	Overload for compressor	85-0564-3
c2.	Starting Device	85-0567-3
c3.	Start Capacitor	85-0576-3
2	Hot Gas Valve	
a.	Hot Gas Valve including 115v Electrical Coil.....	24-0499-3
b.	Hot Gas Valve 115v Coil only	24-0436-3
c.	Hot Gas Valve Including 208-230v/50-60 Hz Electrical Coil.....	24-0500-3
d.	Hot Gas Valve 208-230v/50-60Hz Coil Only	24-0448-3
e.	Hot Gas Valve Rebuild Kit.....	24-0509-3
3.	High Pressure Cut-out	23-5543-3
4.	Expansion Valve	76-0017-3
5.	Expansion Valve Body Insulation Boot	40-0721-3
6.	Expansion Valve Bulb Insulation Boot	40-0720-3
7.	Manifold Strainer(in front of hot gas valve)	83-1016-3
8.	Access Valve.....	83-7325-3
	Miscellaneous-Brackets, Screws, etc.	
50	Bracket (water/electrical inlet)	602682-1
51	Water Inlet Female Wing Adapter	87-0609-3
52	Male Connector 1/4" OD x 1/8" NTPF	13-6096-1
53	Bin Drain Female Wing Adapter After Serial Number 980860665	87-0608-3
54	Bin Drain Tubing (molded)	
a	Up To Serial Number 980860665	44-2085-3
b	After Serial Number 980860665	44-2098-3
55	Bin Drain Hose Clamp (not shown)	56-5064-9
56	Water Inlet Tubing .375 ID	44-2029-1
57	Clamp, Expansion Valve Bulb	56-5052-9
58	Screw, #10-24 x .50	52-0206-9
59	Compressor Mounting Rubber Grommet	85-0306-9
60	Compressor Mounting Washer.....	55-7309-9
61	Compressor Hex Head Cap Screw	50-3770-9
62	Compressor Mounting Sleeve 3/8" ID x 1.031.....	85-0394-9

Q210 REFRIGERATION COMPARTMENT - AIR COOLED



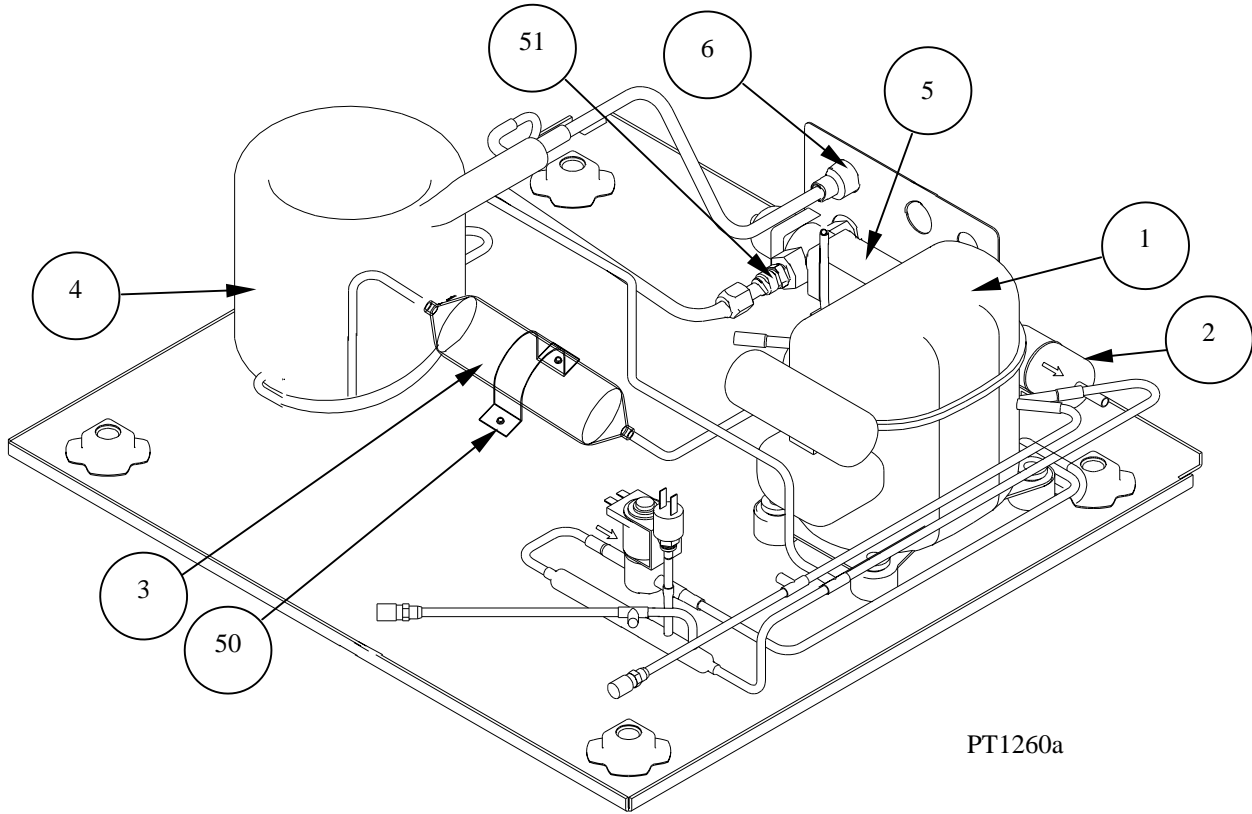
PT1261a

DESCRIPTION

PART NUMBER

1	Compressor (Refer to COMMON PARTS PAGE)	Page 1574
2	Air Condenser	88-5132-3
3	Fan Motor	
	a. 115v.....	24-1308-3
	b. 208-230v/60Hz or 230v/50Hz.....	24-1309-3
4	Fan blade.....	24-1624-3
5	Fan Cycling Control	23-5539-3
6	Air Filter (Not shown)	76-2914-3
7	Drier	89-3022-9
Miscellaneous-Brackets, Screws, etc.		
50	Fan Shroud.....	602685-1
51	Fan Motor Mounting Bracket	602743-1
52	Speed Nut to Mount Fan Blade (not shown).....	54-7507-9
53	Access Valve	83-7325-3

Q210 REFRIGERATION COMPARTMENT - WATER COOLED



PT1260a

DESCRIPTION

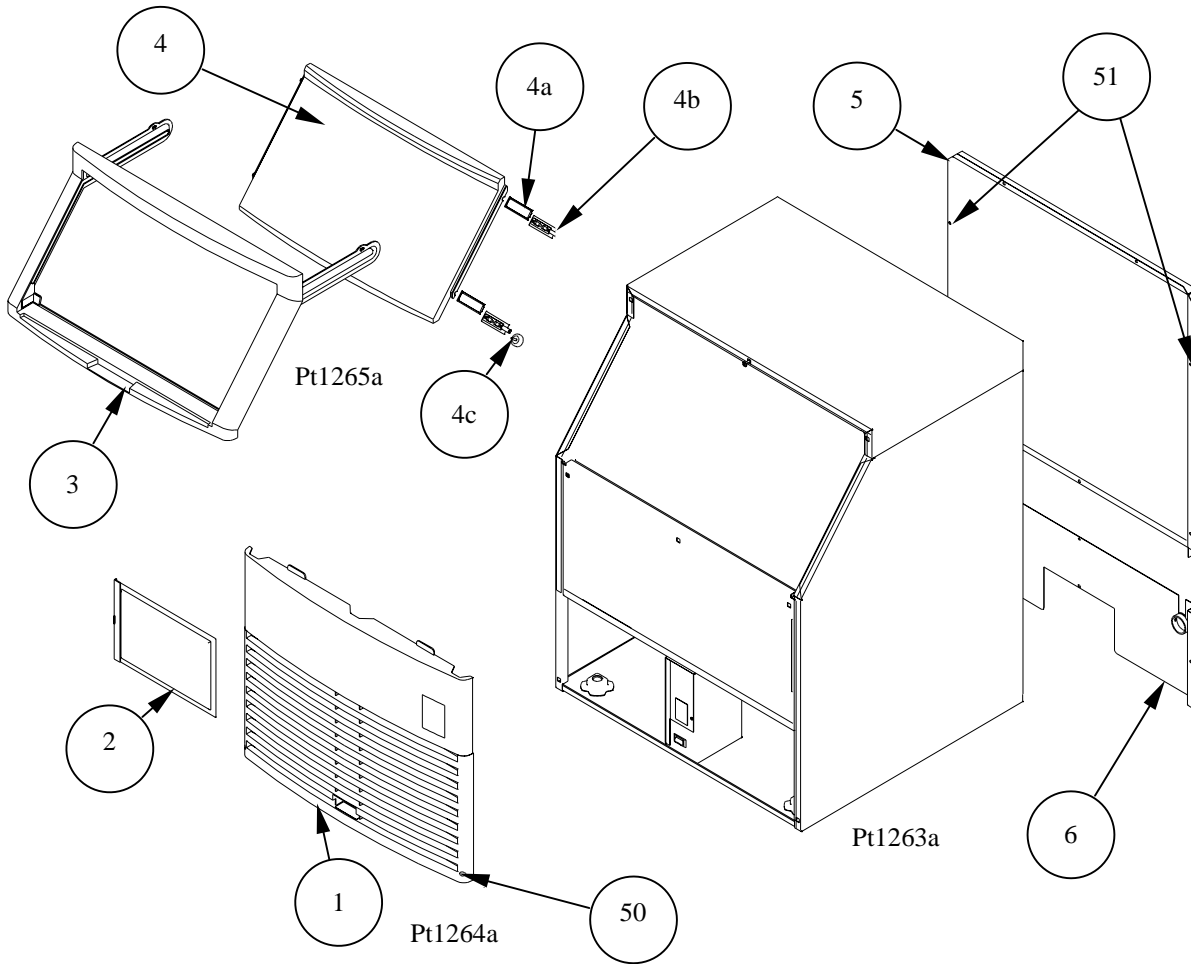
PART NUMBER

1	Compressor (Refer to COMMON PARTS PAGE)	Page 1573
2	Drier	89-3022-9
3	Receiver	12-0003-1
4	Water-cooled Condenser.....	88-6531-3
5	Water Regulating Valve.....	83-7210-3
6	Water Drain Female Wing Adapter	87-0610-3

Miscellaneous-Brackets, Screws, etc.

50	Receiver Strap.....	600189-1
51	Water Coupling.....	83-3202-3

Q210 PANELS



DESCRIPTION

PART NUMBER

1	Front Panel Assembly	76-2915-3
2	Air Filter	76-2914-3
3	Door Frame Assembly	76-2916-3
4	Bin Door	43-0456-3
	a Door Pin Gasket and Door Pin Assembly.....	76-2917-3
	b Door Pin Thumbscrews	50-1235-3
5	Back Panel, Upper	602680-1
6	Back Panel, Lower	
	a Up To Serial Number 980860665.....	602717-1
	b After Serial Number 980860665	603350-1

Miscellaneous-Brackets, Screws, etc.

50	Front Cover Screw	52-0223-9
51	Screw, #10-24 x .50	52-0206-9
52	Ice Scoop (Not shown)	33-0260-3