

Sunkist



COMMERCIAL JUICER

For fresh-squeezed citrus juice that customers prefer.

- Easy to Use
- Easy to Clean
- Completely Safe



Available from your foodservice equipment distributor.

Contact us for the one nearest you: (800) 383-7141 or (909) 933-2160 • Fax (909) 933-2169
Foodservice Equipment Sales, Sunkist Growers • 720 East Sunkist Street, Ontario, CA 91761

Sunkist

Commercial Juicer #8 Parts Information

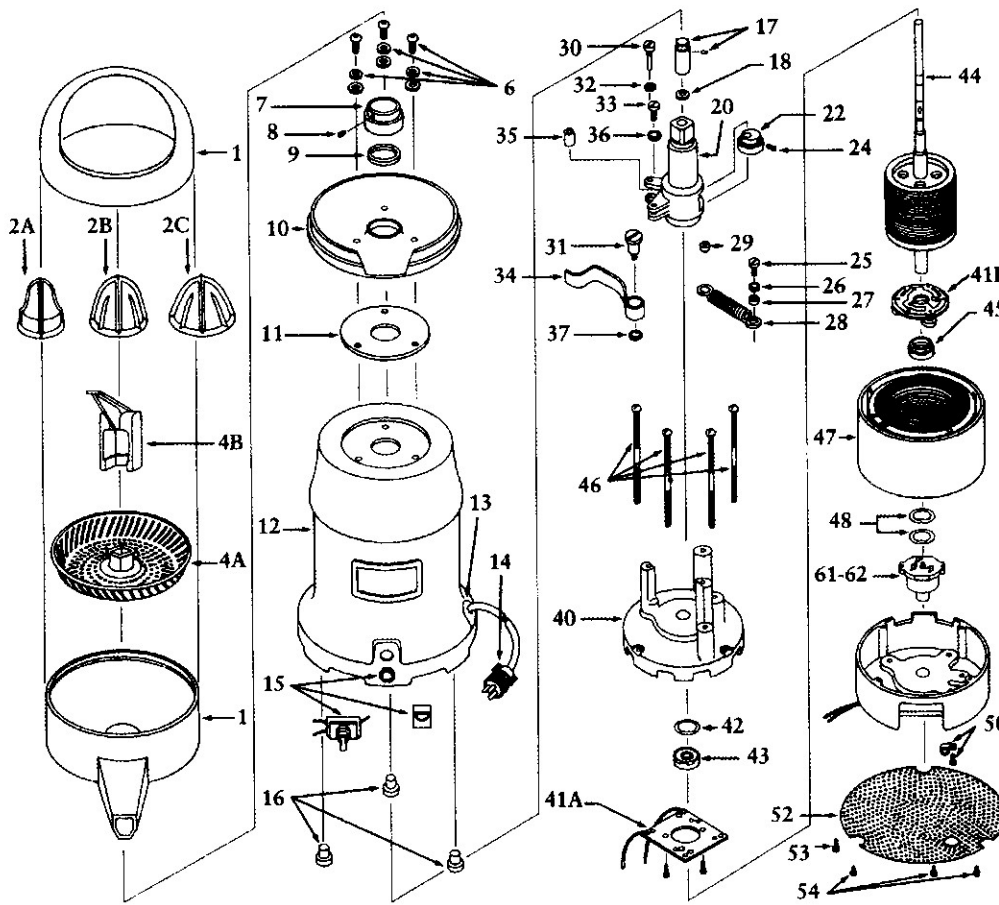
Effective date May 1, 2000

Specifications

Corrosion proof plastic.

Safe...Listed by Underwriters' Laboratories, Canadian Standards Association and NSF International.

Shipping weight 36 pounds
Net weight 31 pounds
Overall dimensions . . 17" high 8" diameter
Horsepower 1/4
Cube 1.12
Carton Size 9 1/2" x 9 1/2" x 21"



Part Number	Description
-------------	-------------

- | | |
|------|---|
| 1. | Plastic Bowl Assembly incl. dome, spout & bowl support |
| 2. | Extracting Bulbs Sets
A. Lemon fits #8 model
B. Orange fits #7 & #8 model
C. Grapefruit fits #7 & #8 model |
| 3. | Lever Lock & Screws for Strainer (for #7 juicer - not illustrated) |
| 4. | Strainer w/Lever Lock & Screws (for #7 juicer -not illustrated) |
| 4A. | Strainer for #8 juicer |
| 4B. | Strainer Puller for #8 juicer |
| 6. | Bowl Support Screws, Spacers, Washers (set of 3) |
| 7. | Umbrella Ring w/Set Screw & Gasket |
| 8. | Umbrella Ring Set Screw (incl'd w/#7) |
| 9. | Umbrella Ring Gasket (incl'd w/#7) |
| 10. | Plastic Bowl Support only (incl'd w/#1) |
| 10A. | Plastic Dome only (incl'd w/#1) |
| 10B. | Plastic Spout only (incl'd w/#1) |
| 11. | Bowl Support Gasket |
| 12. | Chrome Motor Housing |
| 13. | Rubber Cord Bushing |
| 14. | Rubber Cord |
| 14A. | Rubber Cord - Export |

Part Number	Description
-------------	-------------

- | | |
|--------|--|
| 15. | Toggle Switch w/Switch Guard |
| 16. | Rubber Feet (set of 3) |
| 17. | Shaft Tip w/Pin |
| 18. | Eccentric Housing Gasket (incl'd w/#20) |
| 20-7. | Eccentric Housing w/Bearings, Gasket & Brass Tube #7 Juicer |
| 20-8. | Eccentric Housing w/Bearings, Gasket & Brass Tube #8 Juicer |
| 20-8C. | Eccentric Mechanism #8 Juicer |
| 22. | Ecc. Hub w/Bearing & Screw |
| 24. | Ecc. Hub Hex Screw 1/4-20 x 1/2 |
| 25. | Spring Screw to Motor Mount 10-32 |
| 26. | Lock Washers (set of 4) includes #32, 36, 37 |
| 27. | Bronze Bushing Coil Spring to Motor Mount 9/64 x 3/8 x 7/32 |
| 28. | Coil Spring |
| 29. | Bronze Bushing Coil Spring to Ecc. Housing 9/64 x 3/8 x 3/16 |
| 30. | Arm Screw - Small 1/2-32 x 1 1/8 |
| 31. | Arm Screw - Large 1/4-20 x 1 1/8 |
| 33. | Spring Screw to Ecc. Housing 1/4-32 |
| 34. | Eccentric Arm |
| 35. | Ecc. Arm Bronze Bushing 1 1/2 x 3/16 x 5/16 |

Part Number	Description
-------------	-------------

- | | |
|------|--|
| 40. | Top Motor Casting |
| 41A. | Stationary Motor Switch - Howell Motor |
| 41B. | Rotary Motor Switch - 115V Howell Motor |
| 43. | Motor Bearing Top or Bottom - Howell |
| 44. | Rotor (shaft) - Howell Motor 115/60 |
| 45. | Motor Bearing Top or Bottom - Ohio (not illustrated) |
| 46. | Motor Screws (set of 4) |
| 47. | Stator (winding)- Howell Motor 115/60 |
| 48. | Tension Washers -Howell Motor includes #42 |
| 50. | Cord Clip w/Screw |
| 52. | Perforated Base Plate |
| 53. | Ground Screw w/Lock Washer |
| 54. | Base Plate Screws |
| 61. | Thermal Overload 115/60 - Howell Motor |
| 62. | Thermal Overload 230/50 - Howell Motor |
| 64. | Model #7 or #8 Motor - 115/60 4.3 amp - 1750 rpm |
| 65. | Model #7 or #8 motor - 230/50 2.5 amp - 1425 rpm |