



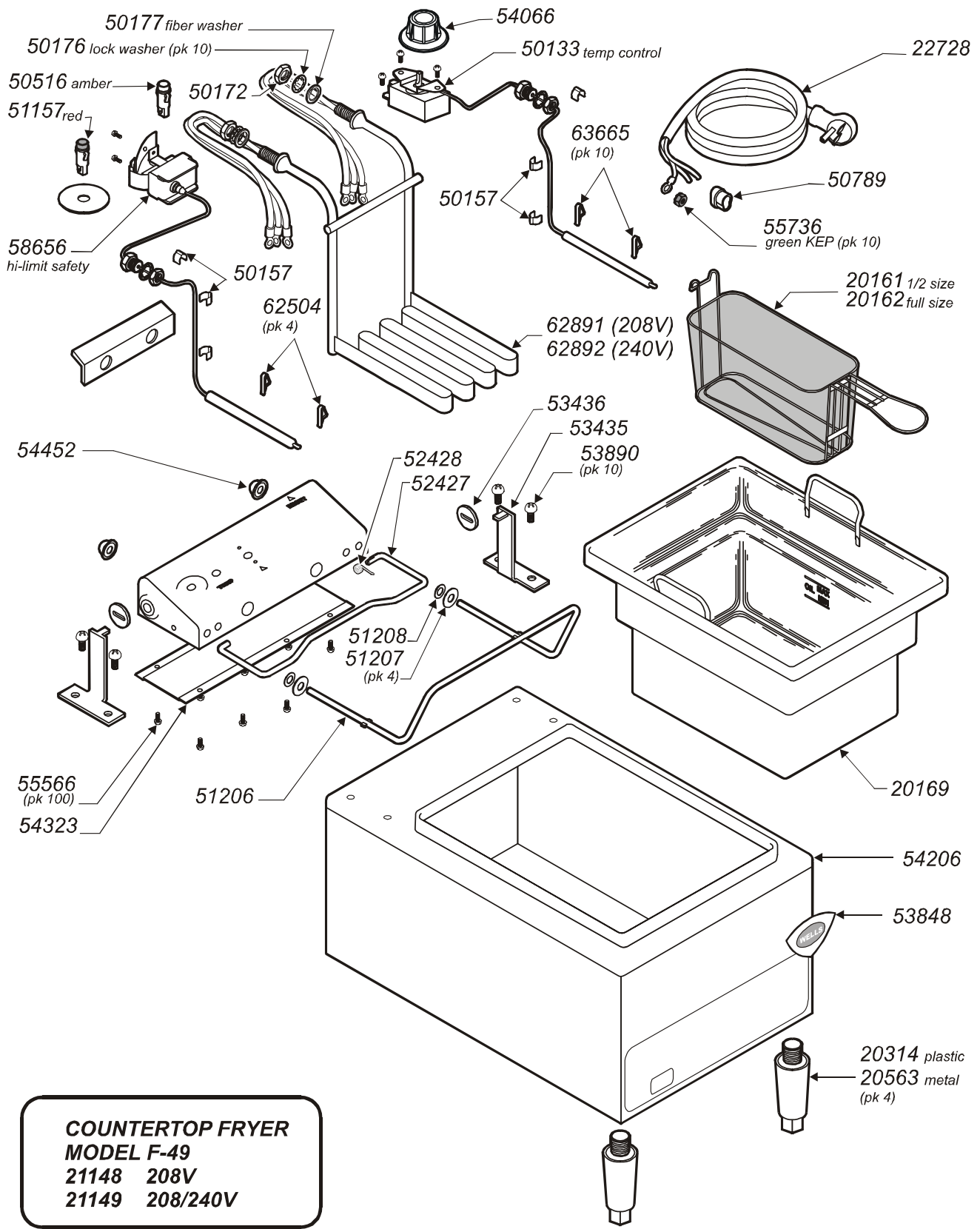
WELLS MANUFACTURING COMPANY
2 ERIK CIRCLE, P. O. Box 280
Verdi, NV 89439
telephone: 775-689-5700
fax: 888-492-2783
www.wellsbloomfield.com

SERVICE PARTS LIST
Countertop Fryers
F-49
F-55 Std
F-67

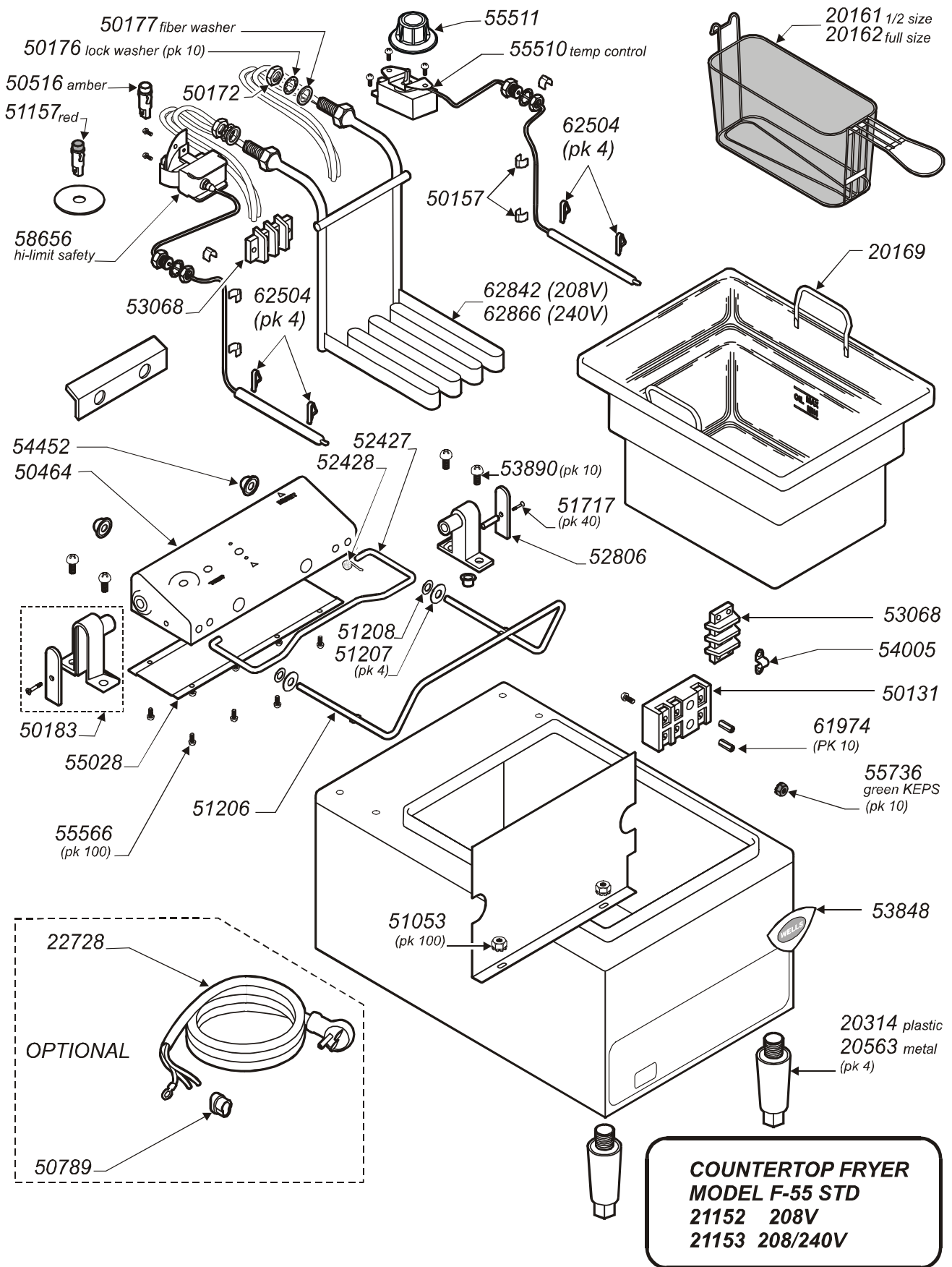
CONTENTS

Description	page
Parts List	2
F-49	3
F-55 Std	4
F-67	5

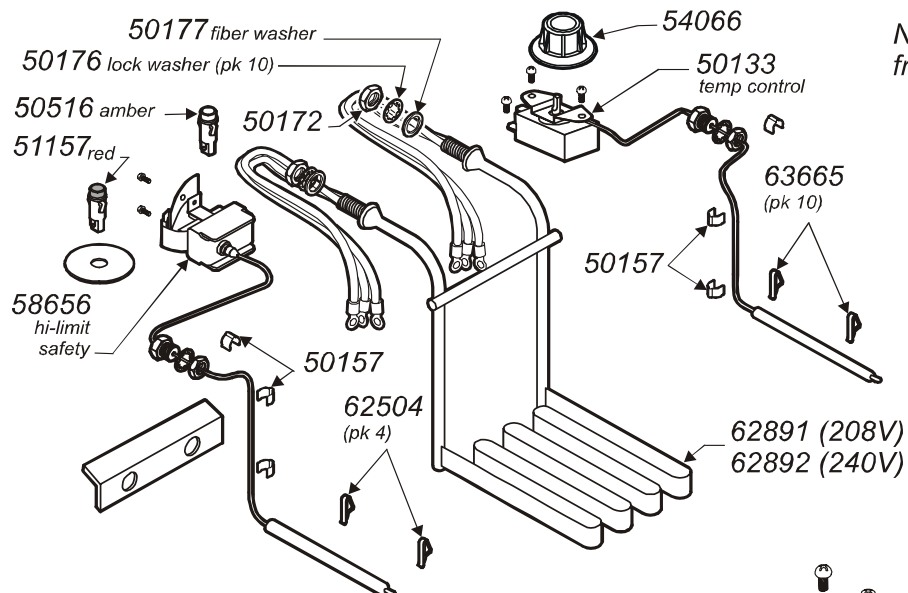
PART #	DESCRIPTION	PART #	DESCRIPTION	PART #	DESCRIPTION
OPTIONAL ACCESSORIES		MECHANICAL		HARDWARE, etc.	
20141	CORDSET FOR F-49	50183	BRACKET, PIVOT, F-55, F-67	50157	CLAMP, CAPILLARY
20142	CORDSET FOR F-55	50464	CONTROL BOX, SHELL ONLY	50172	NUT, FRYER ELEMENT
20161	FRY BASKET, HALF-SIZE	51206	BASKET ROD	50176	LOCK WASHER, ELEMENT (pk 10)
20162	FRY BASKET FULL-SIZE	52427	SUPPORT ROD, CONTROL HEAD	50177	FIBER WASHER, ELEMENT
20169	FRYPOT, F-49, F-55, F-67	52806	COVER, PIVOT BRACKET	50789	STRAIN RELIEF
20388	POTATO SCREEN	52428	SPRING, SUPPORT ROD	51040	GROMMET INSULATION 7/8"
20563	ADJUSTABLE LEG, SET OF 4	53245	COVER, PIVOT INTERMEDIATE, F-67	51053	NUTS, 8-32 KEPS (pk 100)
20690	CRUMB CRADLE 12"x8½"	53435	BRACKET, PIVOT F-49	51207	WASHER, SS BASKET ROD
21010	COVER, FRYPOT	53436	WASHER, SLOTTED PIVOT F-49	51208	WASHER, NEOPRENE BASKET ROD
21727	PAN WARMER LANDING STATION	53848	WELLS TRADE MARK CASTING	51717	SCREW 8-32 x 7/8 PH FL
500141	CORDSET FOR F-67	54066	KNOB, TEMP CONTROL, F-49, F-67	51718	SCREW 8-32 x 3/16 RD (pk 10)
ELECTRICAL		54323	COVER, CONTROL BOX, F-49	51881	SLEEVING VARGLAS 5/8 DIA
50131	TERMINAL BLOCK 3P	54452	RETAINER, BASKET ROD	53890	SCREW 12-24 x3/4 (pk 10)
50133	THERMOSTAT, F-49, F-55	55028	COVER, CONTROL BOX, F-55, F-67	53935	SCREW #6SMS x 1/4 (pk 100)
50516	INDICATOR LIGHT, AMBER	55511	KNOB, TEMP CONTROL, F-55	55566	SCREW #6SMS # 1/4 TH SS (pk100)
51157	INDICATOR LIGHT, RED			55736	NUT, 8-32 KEPS GREEN (pk 10)
53068	TERMINAL BLOCK 2P			61974	NUT 8-32 7/8" LG ALUM (pk 10)
54005	JUMPER, FLAME SENSOR, F-55			62504	CLIP, THERMOBULB (pk 4)
54131	CONNECTOR WIRE 12-14 GA			63665	CLIP THERMOBULB (pk 10)
55510	THERMOSTAT, F-67			63736	BOOT, ROCKER SWITCH
58656	THERMO, HI-LIMIT SAFETY				
62842	ELEMENT, 208V, F-55				
62866	E.ELEMENT, 240V, F-55				
62891	ELEMENT, 208V, F-49, F-67				
62892	ELEMENT, 240V, F-49, F-67				
62899	HEAD ASSY COMPLETE 208V F-49				
62900	HEAD ASSY COMPLETE 240V F-49				
62903	HEAD ASSY COMPLETE 208V F-55				
62904	HEAD ASSY COMPLETE 240V F-55				
62915	HEAD ASSY COMPLETE 208V F-67				
62916	HEAD ASSY COMPLETE 240V F-67				
63652	ELEM & HI-LIMIT KIT 208V F-49 / 67				
63653	ELEM & HI-LIMIT KIT 240V F-49 / 67				
63654	ELEM & HI-LIMIT KIT 208V F-55				
63655	ELEM & HI-LIMIT KIT 240V F-55				



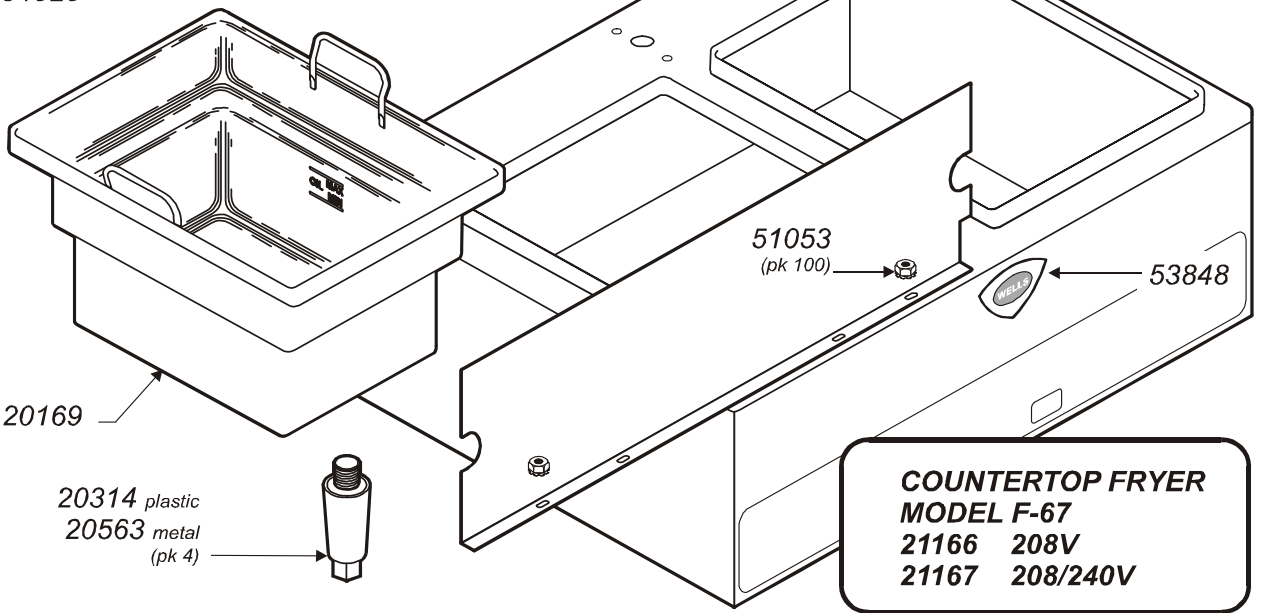
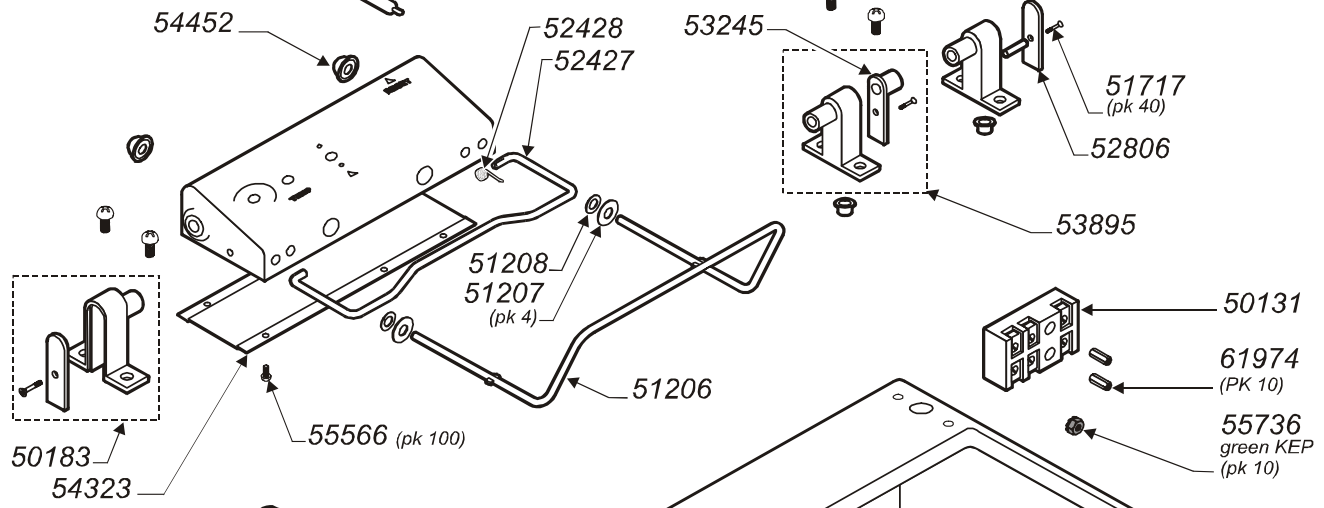
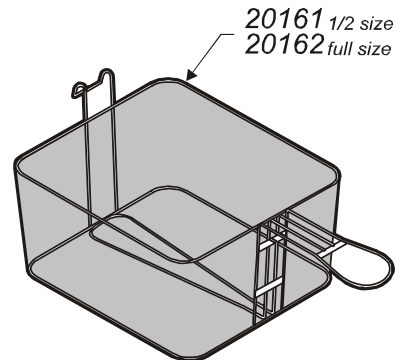
COUNTERTOP FRYER
MODEL F-49
 21148 208V
 21149 208/240V



COUNTERTOP FRYER
MODEL F-55 STD
 21152 208V
 21153 208/240V



NOTE: Unit has two identical fryer heads. Only one is shown.



**COUNTERTOP FRYER
MODEL F-67
21166 208V
21167 208/240V**



*Wells Manufacturing proudly supports CFESA
Commercial Food Equipment Service Association*

SERVICE TRAINING - QUALITY SERVICE



CUSTOMER SATISFACTION



WELLS

WELLS MANUFACTURING COMPANY - Division of CARRIER COMMERCIAL REFRIGERATION
2 ERIK CIRCLE, P. O. Box 280

Verdi, NV 89439

telephone: 775-689-5700

fax: 888-492-2783

www.wellsbloomfield.com